

# FOR SALE OR LEASE



Lincoln Park Market Place  
Joe Harvey Boulevard and Grimes Street  
Hobbs, New Mexico 88240

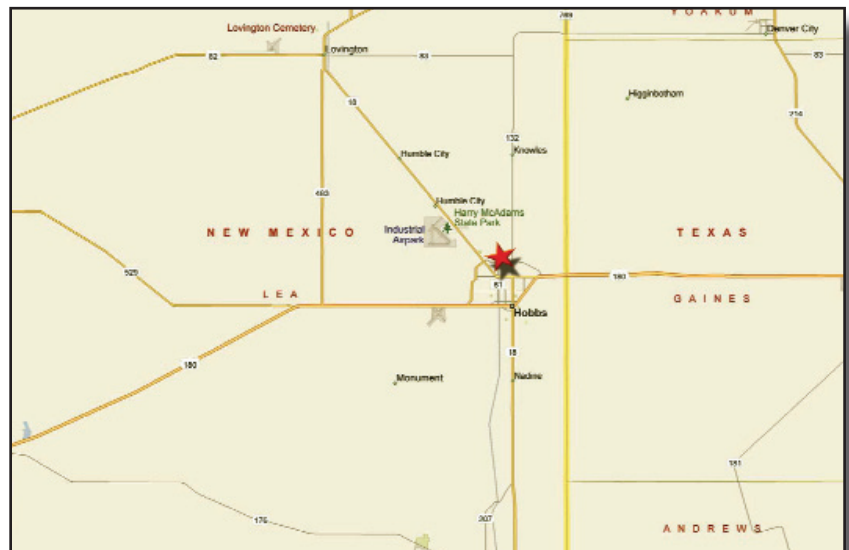
## HIGHLIGHTS:

- 18.73 acre master planned commercial development
- Currently available – In-Line 1,600 sf – 8,000 sf
- Pad sites – 0.84 acres – 1.14 acres
- \$2.2 billion new investment going into the Hobbs market area
- New subdivision with more than 1,700 homes planned, platted or under construction
- New Walgreen's on hard corner (Under construction)
- Directly across the street from Home Depot

DEMOGRAPHICS	1 MILE	3 MILES	5 MILES
Population	6,672	26,775	37,499
Average Household Income	\$67,045	\$53,456	\$49,932
Daytime Population	2,229	15,006	19,108

For detailed information contact:

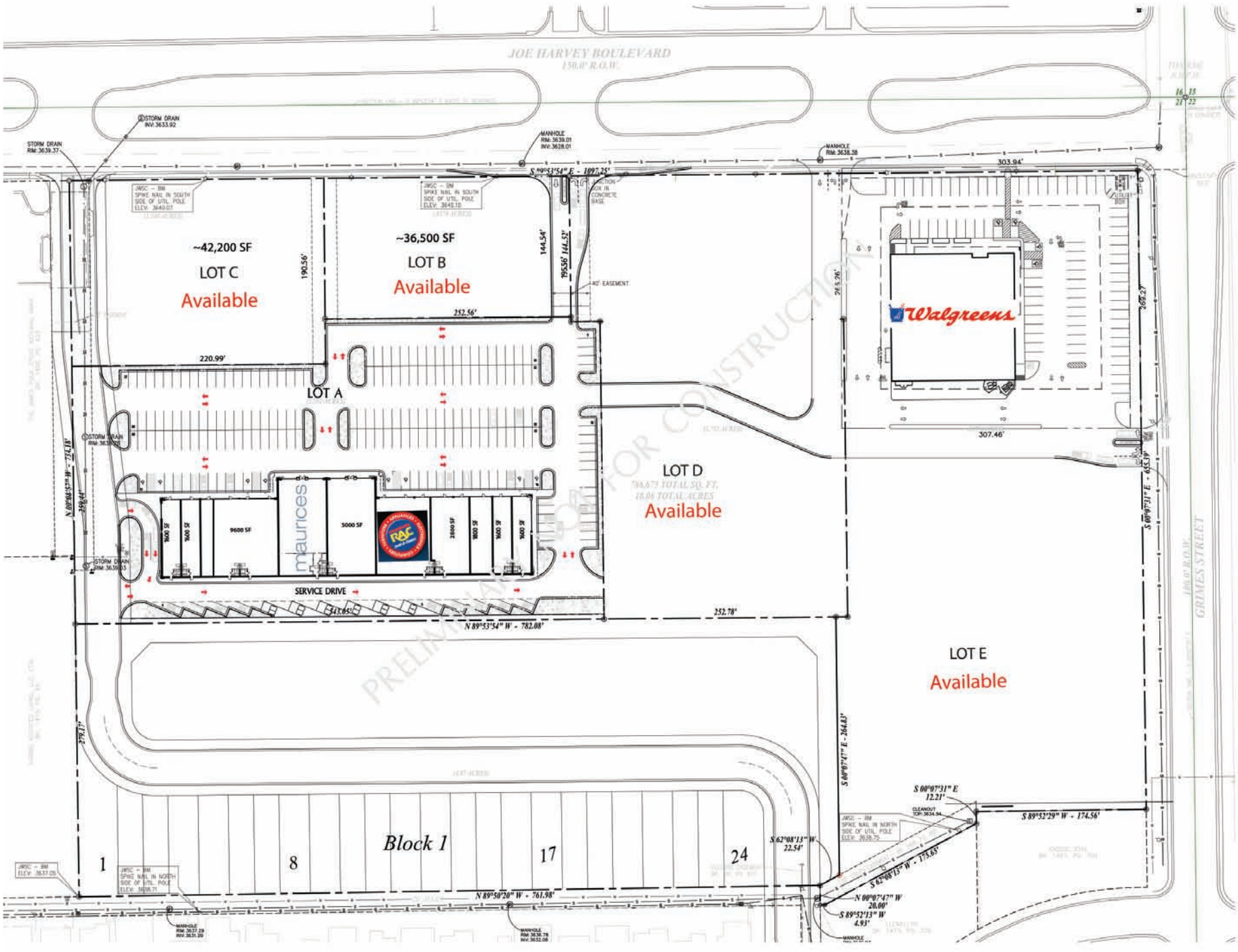
**Jonathan Bolzle**  
624 South Boston, Suite 400  
Tulsa, Oklahoma 74119  
918.728.3442 fax 918.743.4084  
www.kmodevelopment.com  
jbolzle@kmodevelopment.com











PRELIMINARY FOR CONSTRUCTION

